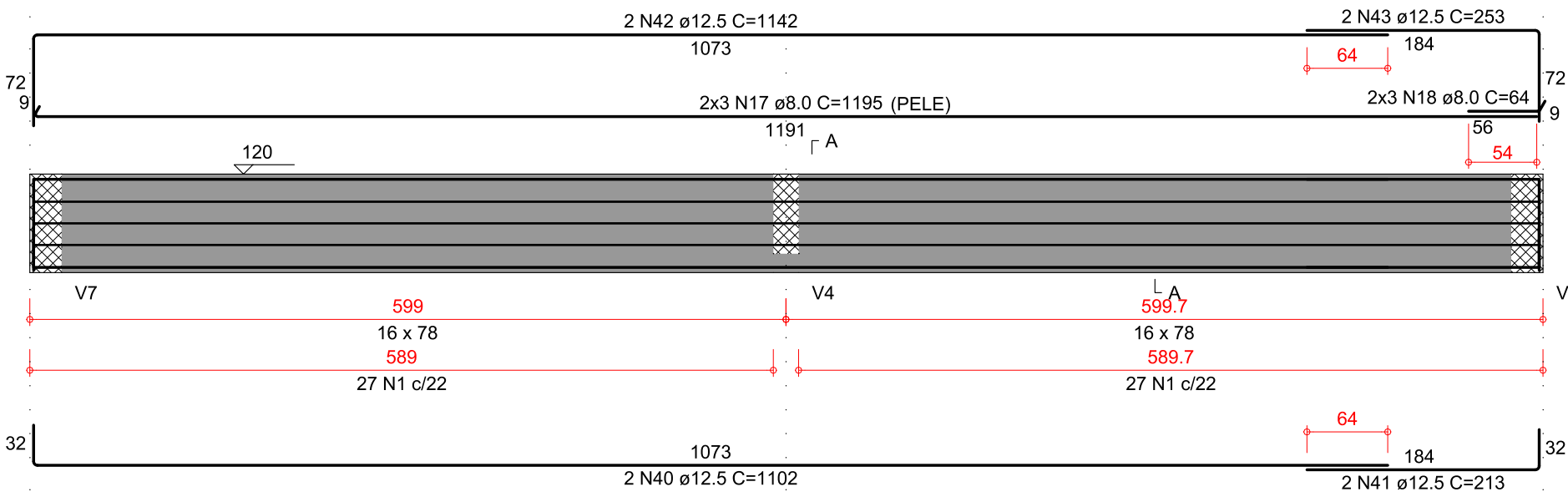


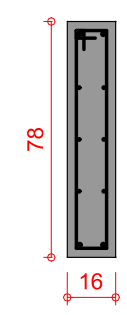
ARMADURAS DAS VIGAS DO PAVIMENTO PALCO - 02 DE 03

ESCALA INDICADA

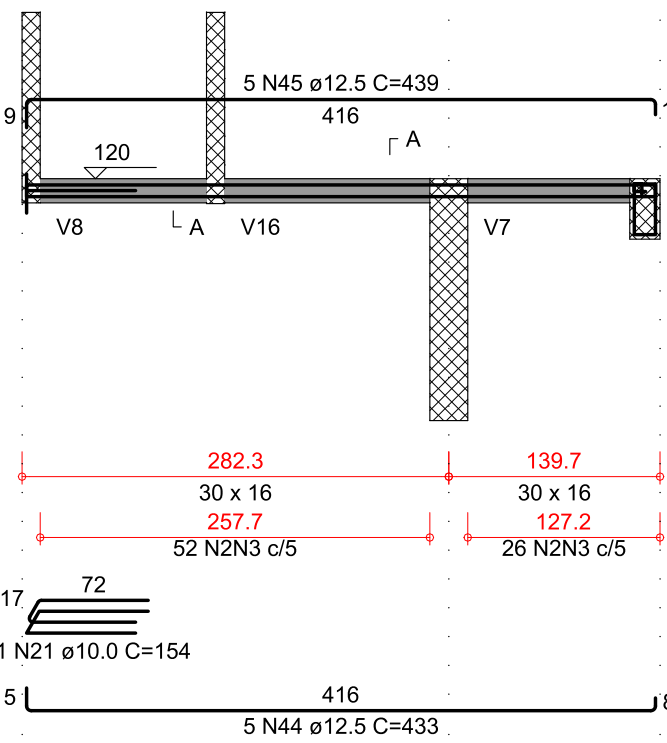
V9
ESC 1:50



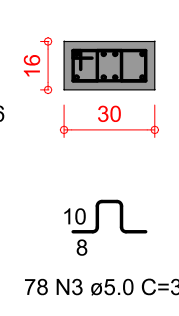
SEÇÃO A-A
ESC 1:25



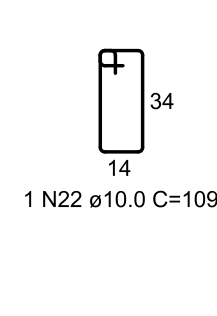
V12
ESC 1:50



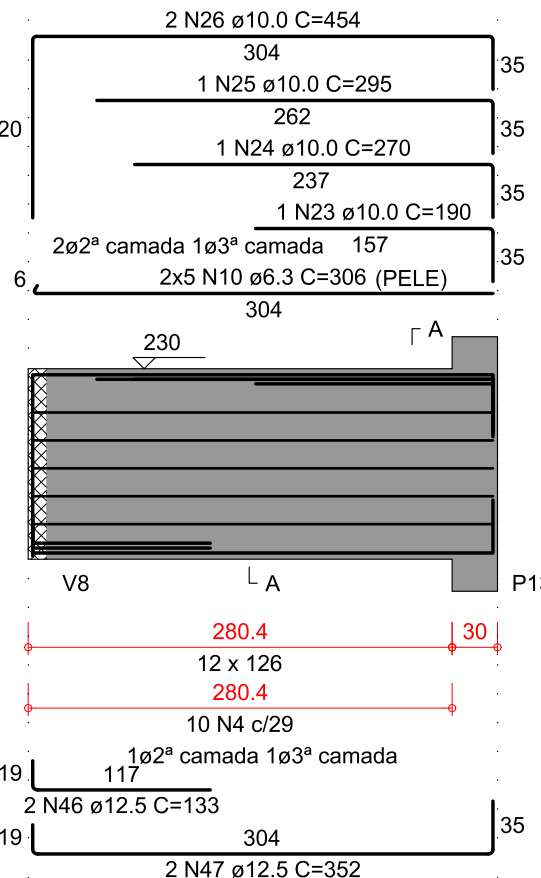
SEÇÃO A-A
ESC 1:25



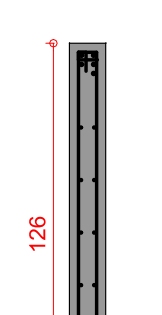
SUSPENSÃO V6
ESC 1:25



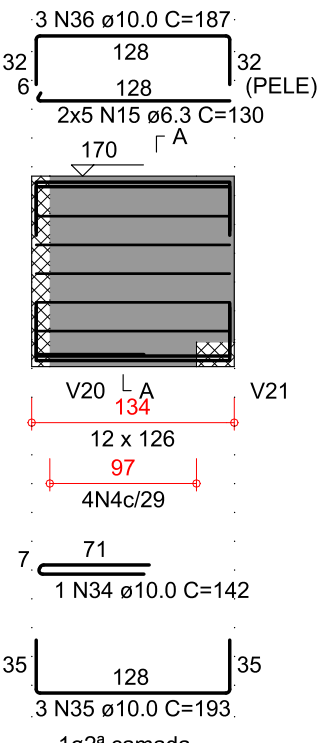
V13
ESC 1:50



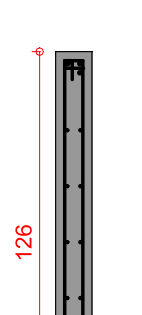
SEÇÃO A-A
ESC 1:25



V18
ESC 1:50



SEÇÃO A-A
ESC 1:25



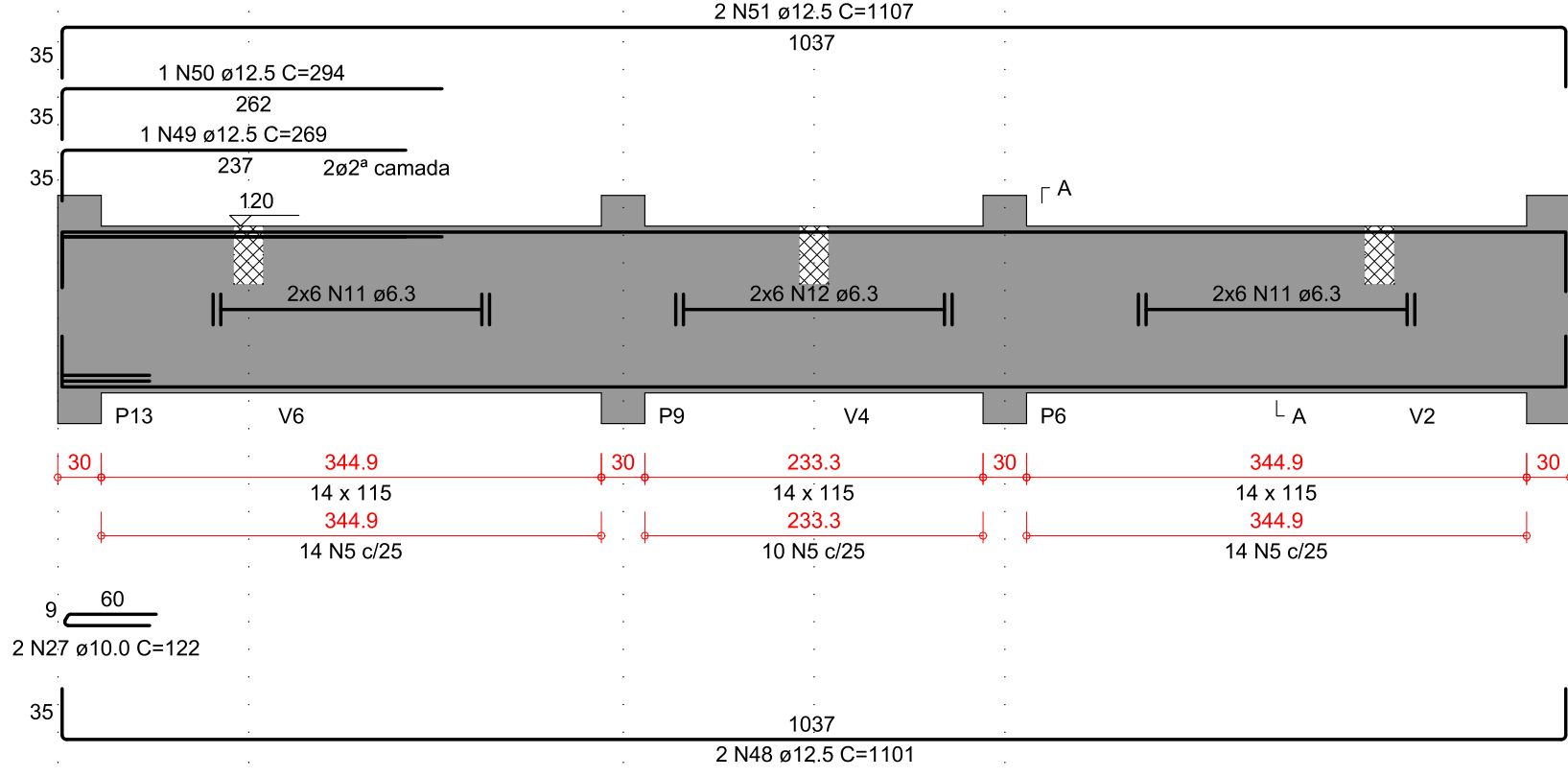
RELAÇÃO DO AÇO					
		V12	V13	V16	V19
AÇO	N	DIAM (mm)	QUANT	C.UNIT (cm)	C.TOTAL (cm)
CA60	1	5.0	54	175	9450
	2	5.0	78	79	6162
	3	5.0	78	36	3042
	4	5.0	75	263	19725
	5	5.0	38	245	9310
	6	5.0	38	347	13188
	7	5.0	14	107	1488
	8	5.0	65	69	4485
	9	5.0	65	33	2145
	10	5.0	14	306	3060
CA50	11	6.3	24	corr	9576
	12	6.3	12	corr	3444
	13	6.3	10	corr	7170
	14	6.3	10	corr	7170
	15	6.3	20	130	2600
	16	6.3	10	286	2860
	17	8.0	7	1195	7170
	18	8.0	6	64	384
	19	8.0	14	382	5348
	20	8.0	14	386	5404
	21	10.0	2	154	308
	22	10.0	1	109	109
	23	10.0	1	190	190
	24	10.0	1	270	270
	25	10.0	1	295	295
	26	10.0	2	454	908
	27	10.0	2	122	244
	28	10.0	1	535	535
	29	10.0	2	782	1564
	30	10.0	7	776	2328
	31	10.0	3	771	2313
	32	10.0	1	203	203
	33	10.0	2	896	1712
	34	10.0	7	142	994
	35	10.0	6	193	1158
	36	10.0	3	187	561
	37	10.0	3	275	825
	38	10.0	3	343	1029
	39	10.0	3	425	1275
	40	12.5	2	1102	2204
	41	12.5	2	213	426
	42	12.5	2	1142	2284
	43	12.5	2	253	506
	44	12.5	5	433	2165
	45	12.5	5	439	2195
	46	12.5	2	133	266
	47	12.5	2	352	704
	48	12.5	2	1101	2202
	49	12.5	1	269	269
	50	12.5	1	294	294
	51	12.5	2	1107	2214
	52	12.5	7	442	3094
	53	12.5	2	412	824
	54	12.5	1	373	373
	55	12.5	8	492	3936
	56	12.5	2	598	1196
	57	12.5	1	114	114
	58	12.5	1	34	34
	59	12.5	4	288	1152
	60	16.0	4	291	1164

RESUMO DO AÇO

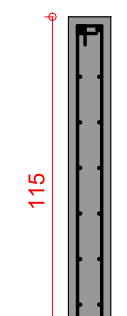
AÇO	DIAM (mm)	C.TOTAL (m)	PESO + 10% (kg)
CA50	6.3	358.2	96.4
	8.0	183.1	79.5
	10.0	168.2	114.1
	12.5	264.5	280.3
	16.0	11.6	20.2
CA60	5.0	690	117
PESO TOTAL (kg)			
CA50	590.5		
CA60	117		

Volume de concreto (C-30) = 9.51 m³
Área de forma = 138.30 m²

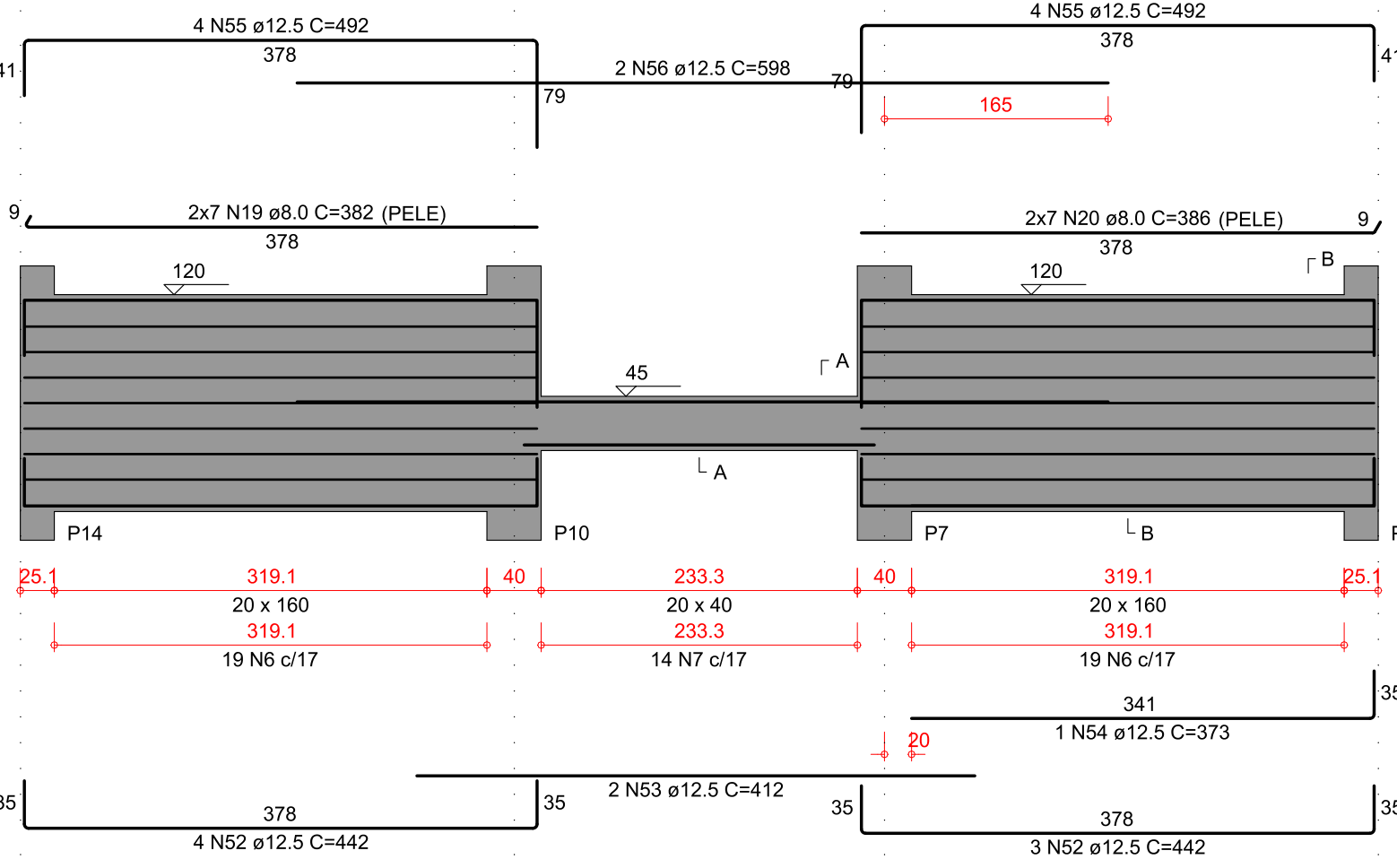
V14
ESC 1:50



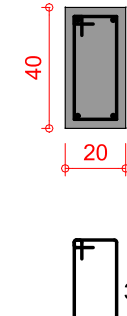
SEÇÃO A-A
ESC 1:25



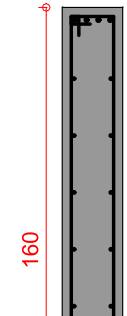
V15
ESC 1:50



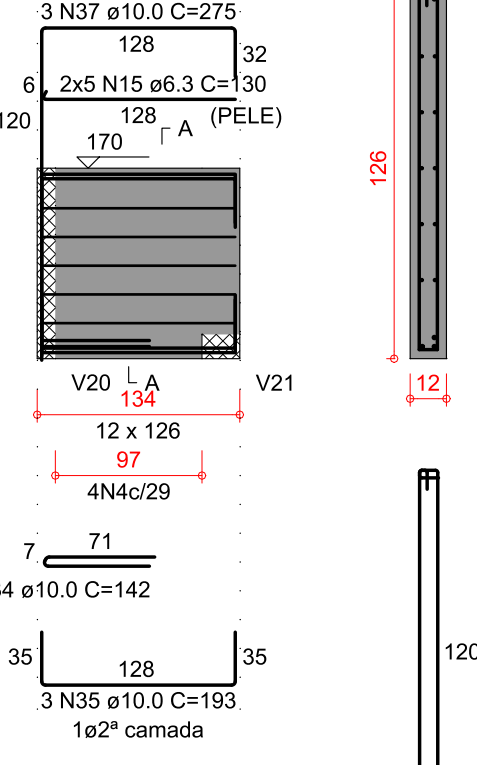
SEÇÃO A-A
ESC 1:25



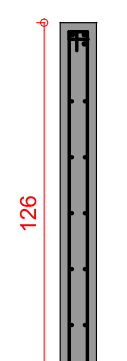
SEÇÃO B-B
ESC 1:25



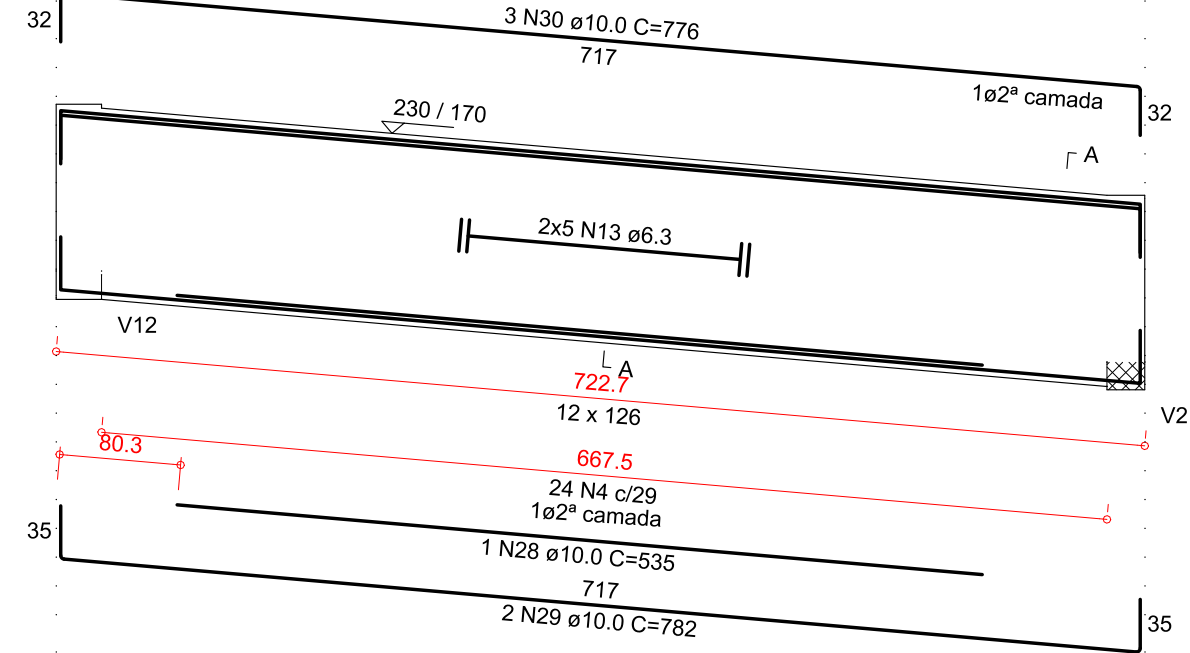
V19
ESC 1:50



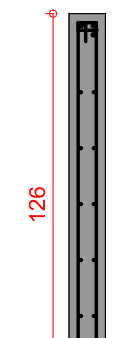
SEÇÃO A-A
ESC 1:25



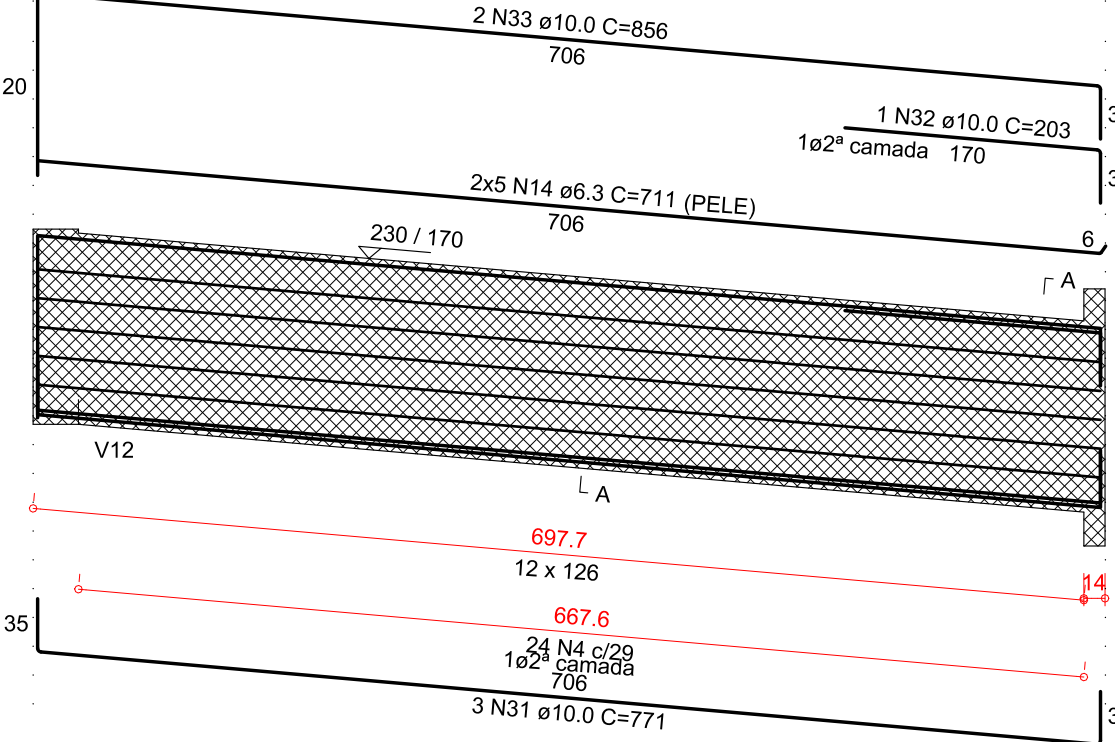
V16
ESC 1:50



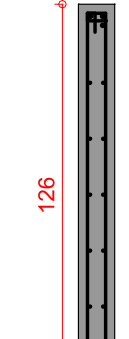
SEÇÃO A-A
ESC 1:25



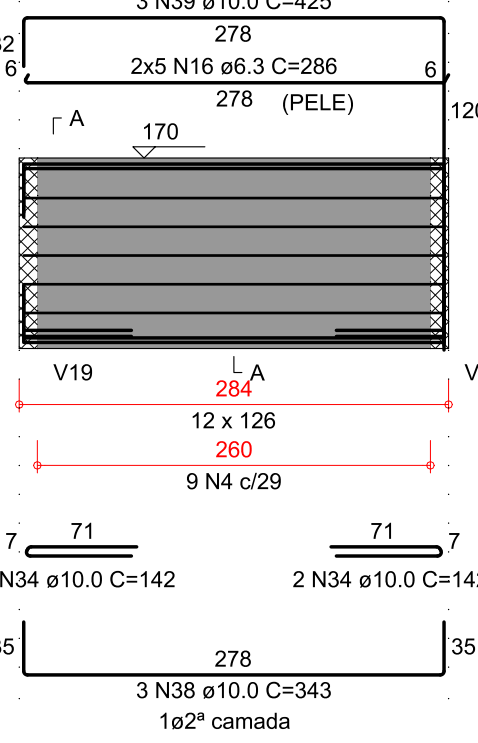
V17
ESC 1:50



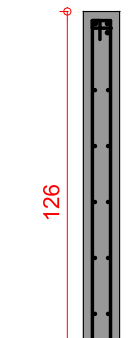
SEÇÃO A-A
ESC 1:25



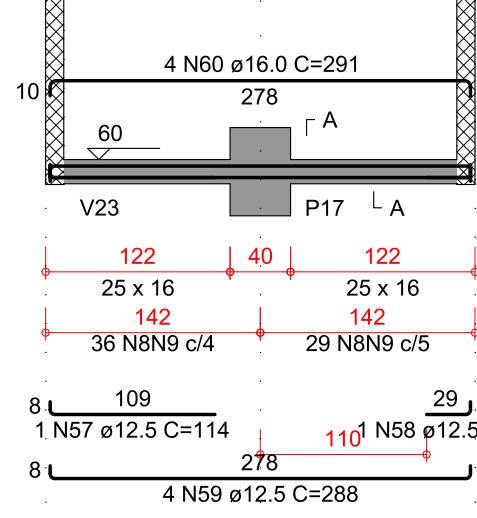
V20
ESC 1:50



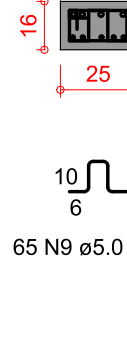
SEÇÃO A-A
ESC 1:25



V21
ESC 1:50



SEÇÃO A-A
ESC 1:25



SOLUÇÕES INTEGRADAS PARA ENGENHARIA



- GERENCIAMENTO DE PROJETOS
- ANÁLISE DE INVESTIMENTOS IMOBILIÁRIOS
- CAPACITAÇÃO E ORIENTAÇÃO TÉCNICA
- PROJETOS COMPATIBILIZADOS

OBRA: REVITALIZAÇÃO DO ESPAÇO MASCARENHAS - PALCO

PROPRIETÁRIO: PREFEITURA MUNICIPAL DE JUIZ DE FORA

REFERÊNCIA: ARMADURAS DAS VIGAS DO PAVIMENTO PALCO - 02 DE 03

ESCALA:	DATA:	DESENHO:	ARQUIVO:	FOLHA:
INDICADA	OUT-2021	CAD	1958JUI-STR-DCT-PE-estruturalpalco-R02	09 .13
PROJETO:	ENG. CIVIL JACKSON KREUSCH			
	CREA - PR 89866/D			